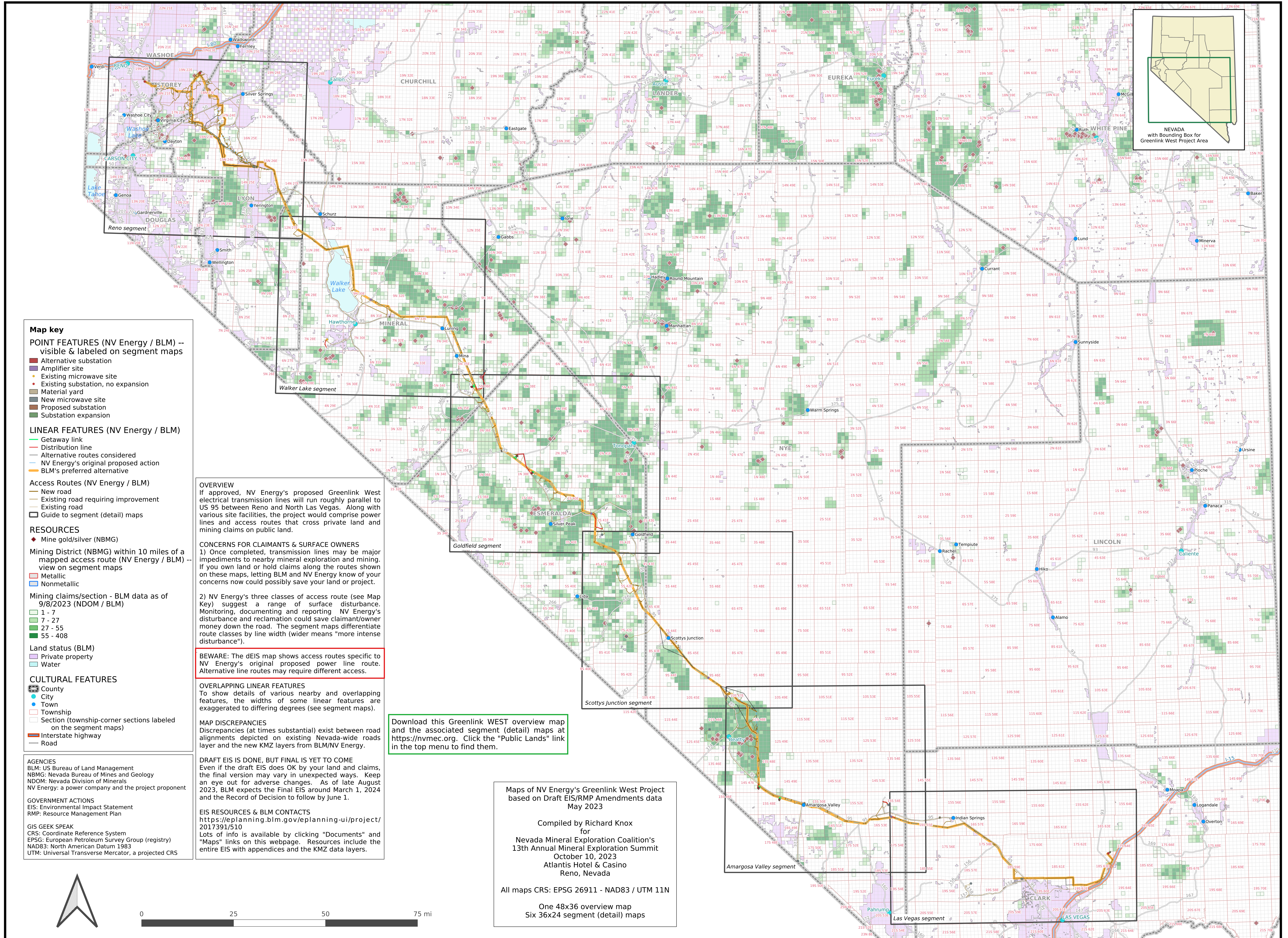


# Greenlink WEST Draft EIS (May 2023) Overview Map (Reno to Las Vegas)



- Map key**
- POINT FEATURES (NV Energy / BLM) -- visible & labeled on segment maps**
- Alternative substation
  - Amplifier site
  - Existing microwave site
  - Existing substation, no expansion
  - Material yard
  - New microwave site
  - Proposed substation
  - Substation expansion
- LINEAR FEATURES (NV Energy / BLM)**
- Getaway link
  - Distribution line
  - Alternative routes considered
  - NV Energy's original proposed action
  - BLM's preferred alternative
- Access Routes (NV Energy / BLM)**
- New road
  - Existing road requiring improvement
  - Existing road
  - Guide to segment (detail) maps
- RESOURCES**
- Mine gold/silver (NBMG)
  - Mining District (NBMG) within 10 miles of a mapped access route (NV Energy / BLM) -- view on segment maps
  - Metallic
  - Nonmetallic
- Mining claims/section - BLM data as of 9/8/2023 (NDOM / BLM)**
- 1 - 7
  - 7 - 27
  - 27 - 55
  - 55 - 408
- Land status (BLM)**
- Private property
  - Water
- CULTURAL FEATURES**
- County
  - City
  - Town
  - Township
  - Section (township-corner sections labeled on the segment maps)
  - Interstate highway
  - Road

**OVERVIEW**  
If approved, NV Energy's proposed Greenlink West electrical transmission lines will run roughly parallel to US 95 between Reno and North Las Vegas. Along with various site facilities, the project would comprise power lines and access routes that cross private land and mining claims on public land.

**CONCERNS FOR CLAIMANTS & SURFACE OWNERS**  
1) Once completed, transmission lines may be major impediments to nearby mineral exploration and mining. If you own land or hold claims along the routes shown on these maps, letting BLM and NV Energy know of your concerns now could possibly save your land or project.

2) NV Energy's three classes of access route (see Map Key) suggest a range of surface disturbance. Monitoring, documenting and reporting NV Energy's disturbance and reclamation could save claimant/owner money down the road. The segment maps differentiate route classes by line width (wider means "more intense disturbance").

**BEWARE:** The dEIS map shows access routes specific to NV Energy's original proposed power line route. Alternative line routes may require different access.

**OVERLAPPING LINEAR FEATURES**  
To show details of various nearby and overlapping features, the widths of some linear features are exaggerated to differing degrees (see segment maps).

**MAP DISCREPANCIES**  
Discrepancies (at times substantial) exist between road alignments depicted on existing Nevada-wide roads layer and the new KMZ layers from BLM/NV Energy.

**DRAFT EIS IS DONE, BUT FINAL IS YET TO COME**  
Even if the draft EIS does OK by your land and claims, the final version may vary in unexpected ways. Keep an eye out for adverse changes. As of late August 2023, BLM expects the Final EIS around March 1, 2024 and the Record of Decision to follow by June 1.

**EIS RESOURCES & BLM CONTACTS**  
<https://eplanning.blm.gov/eplanning-ui/project/2017391/510>  
Lots of info is available by clicking "Documents" and "Maps" links on this webpage. Resources include the entire EIS with appendices and the KMZ data layers.

Download this Greenlink WEST overview map and the associated segment (detail) maps at <https://nvmec.org>. Click the "Public Lands" link in the top menu to find them.

Maps of NV Energy's Greenlink West Project based on Draft EIS/RMP Amendments data May 2023

Compiled by Richard Knox for Nevada Mineral Exploration Coalition's 13th Annual Mineral Exploration Summit October 10, 2023 Atlantis Hotel & Casino Reno, Nevada

All maps CRS: EPSG 26911 - NAD83 / UTM 11N

One 48x36 overview map  
Six 36x24 segment (detail) maps

