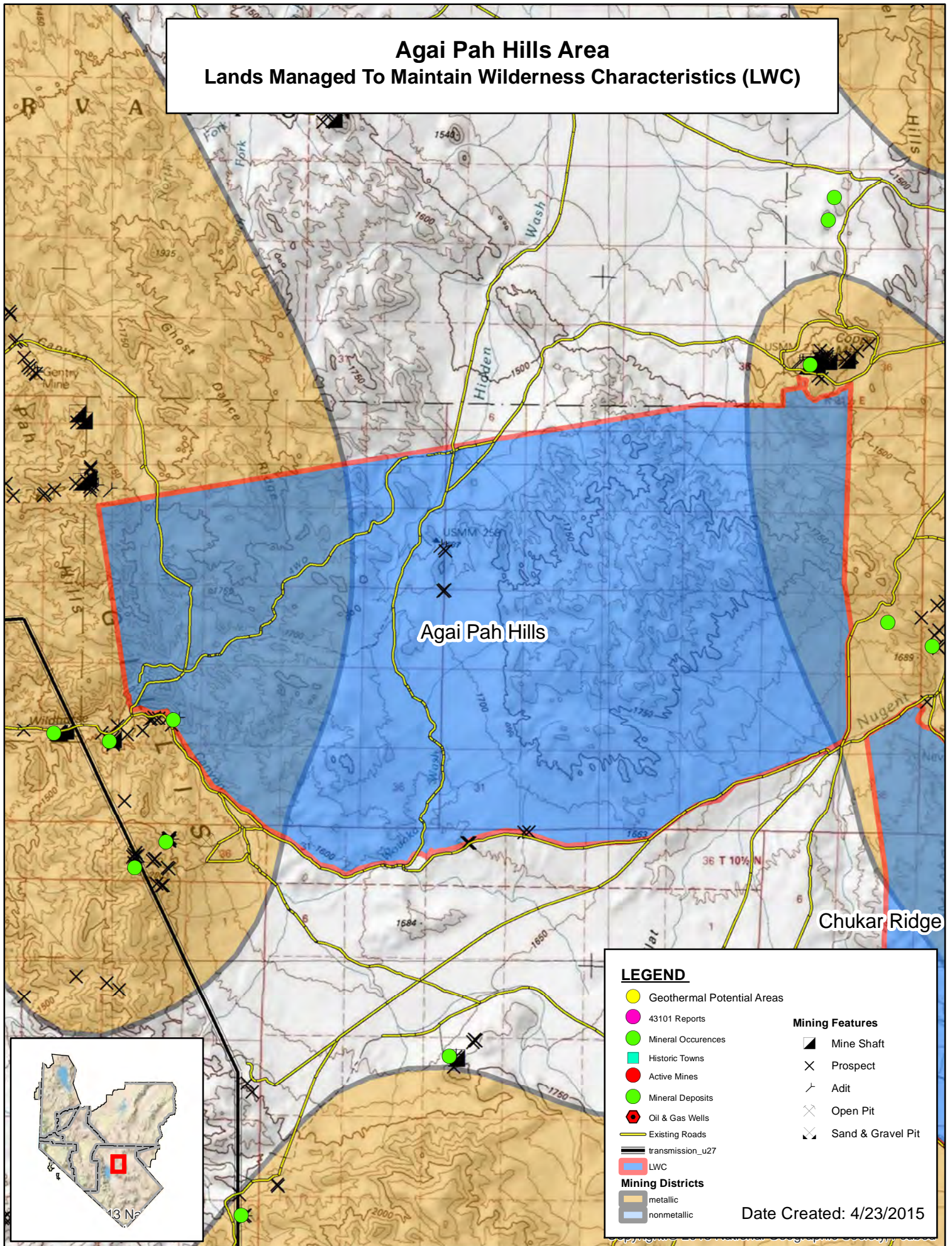


# Agai Pah Hills Area

## Lands Managed To Maintain Wilderness Characteristics (LWC)



### LEGEND

- Geothermal Potential Areas
  - 43101 Reports
  - Mineral Occurrences
  - Historic Towns
  - Active Mines
  - Mineral Deposits
  - Oil & Gas Wells
  - Existing Roads
  - transmission\_u27
  - LWC
  - Mining Districts
    - metallic
    - nonmetallic
- | Mining Features                        |                   |
|--|-------------------|
| <span style="color: black;">▲</span>   | Mine Shaft        |
| <span style="color: black;">×</span>   | Prospect          |
| <span style="color: black;">└─┘</span> | Adit              |
| <span style="color: black;">⊗</span>   | Open Pit          |
| <span style="color: black;">⊗</span>   | Sand & Gravel Pit |

Date Created: 4/23/2015

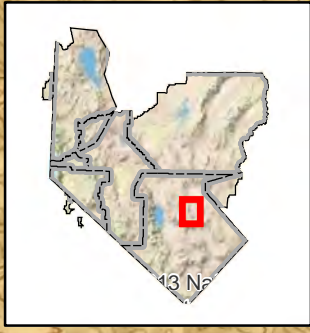
# Chukar Ridge Area

## Lands Managed To Maintain Wilderness Characteristics (LWC)

Agai Pah Hills

Chukar Ridge

Sorra

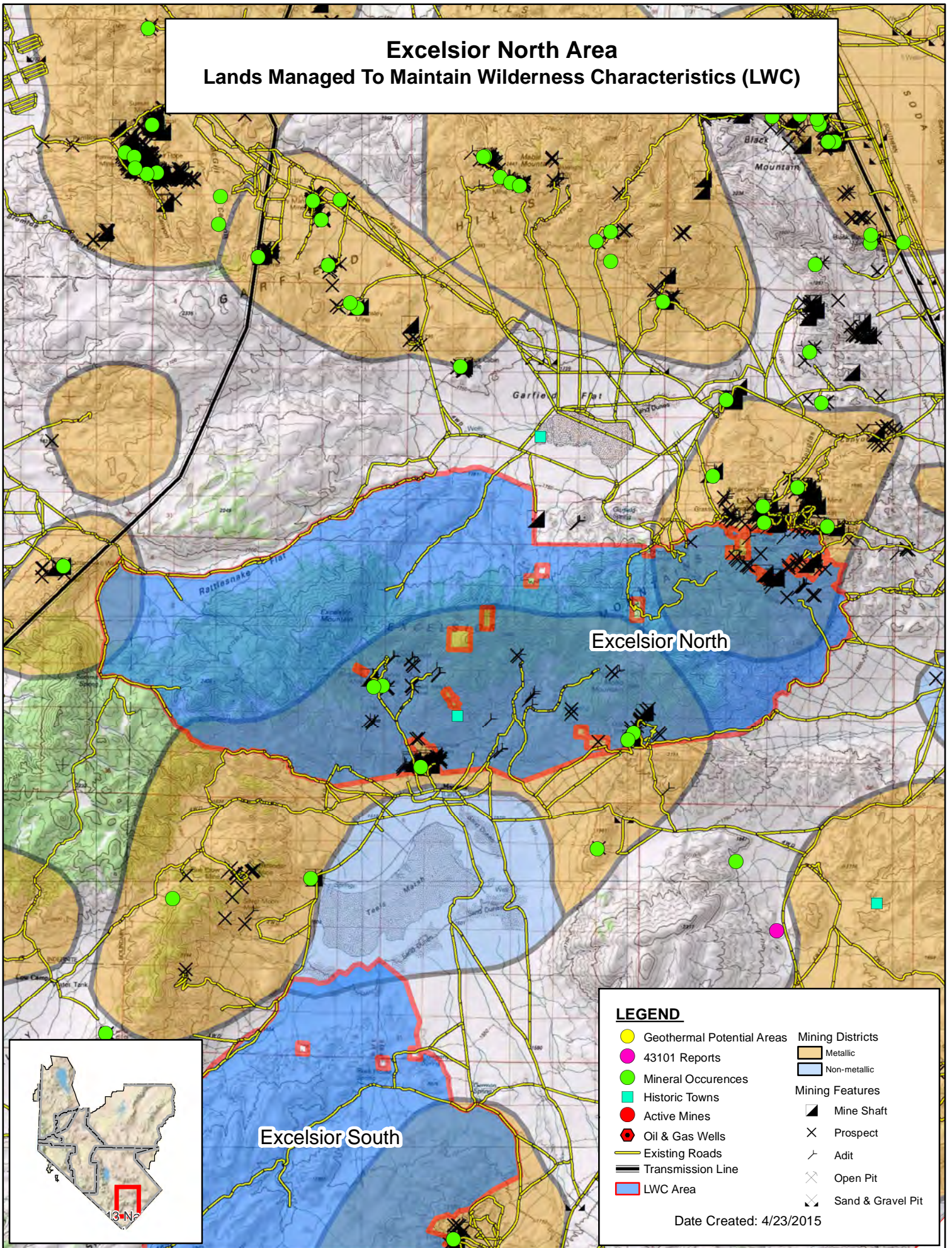


### LEGEND

- |  |  |
|--|--|
| <span style="color: yellow;">●</span> Geothermal Potential Areas   | <span style="background-color: #f4a460; border: 1px solid black; display: inline-block; width: 15px; height: 10px;"></span> Mining Districts |
| <span style="color: magenta;">●</span> 43101 Reports   | <span style="background-color: #f4a460; border: 1px solid black; display: inline-block; width: 15px; height: 10px;"></span> Metallic         |
| <span style="color: green;">●</span> Mineral Occurrences   | <span style="background-color: #add8e6; border: 1px solid black; display: inline-block; width: 15px; height: 10px;"></span> Non-metallic     |
| <span style="color: cyan;">■</span> Historic Towns   | <b>Mining Features</b>   |
| <span style="color: red;">●</span> Active Mines  | <span style="color: black;">▲</span> Mine Shaft  |
| <span style="color: red;">●</span> Oil & Gas Wells   | <span style="color: black;">×</span> Prospect  |
| <span style="color: yellow;">—</span> Existing Roads   | <span style="color: black;">└─┘</span> Adit  |
| <span style="color: black;">—</span> Transmission Line   | <span style="color: black;">⊗</span> Open Pit  |
| <span style="background-color: #add8e6; border: 1px solid black; display: inline-block; width: 15px; height: 10px;"></span> LWC Area | <span style="color: black;">⊗</span> Sand & Gravel Pit   |

Date Created: 4/23/2015

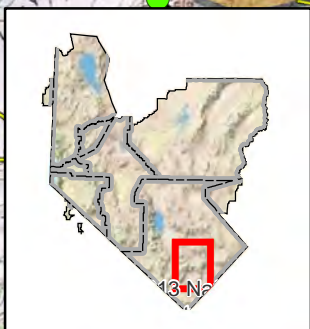
# Excelsior North Area Lands Managed To Maintain Wilderness Characteristics (LWC)



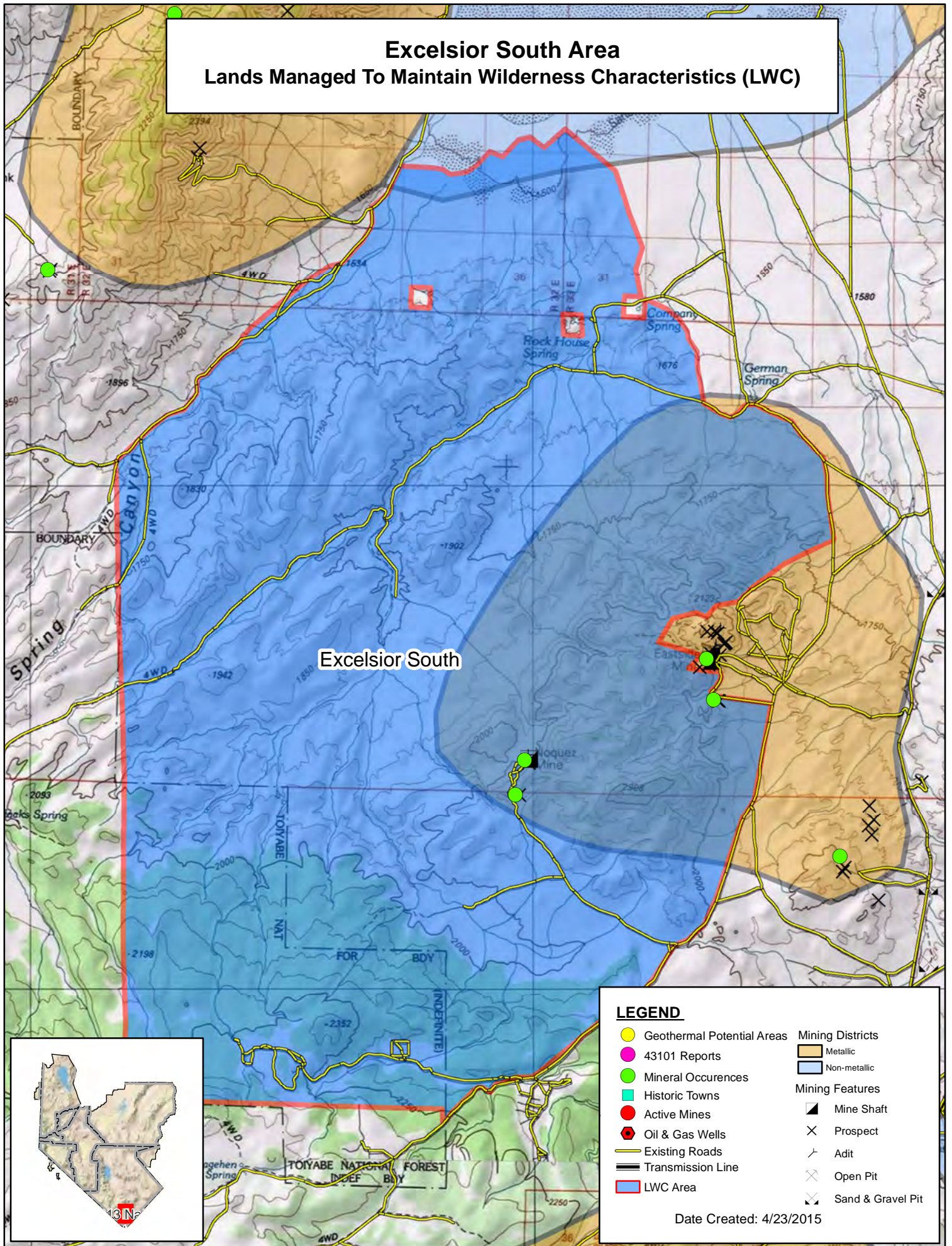
## LEGEND

- Geothermal Potential Areas
  - 43101 Reports
  - Mineral Occurrences
  - Historic Towns
  - Active Mines
  - ◆ Oil & Gas Wells
  - Existing Roads
  - Transmission Line
  - LWC Area
- Metallic Mining Districts
  - Non-metallic Mining Districts
- Mining Features**
  - ▲ Mine Shaft
  - × Prospect
  - └─ Adit
  - ⊗ Open Pit
  - ⊗ Sand & Gravel Pit

Date Created: 4/23/2015



# Excelsior South Area Lands Managed To Maintain Wilderness Characteristics (LWC)

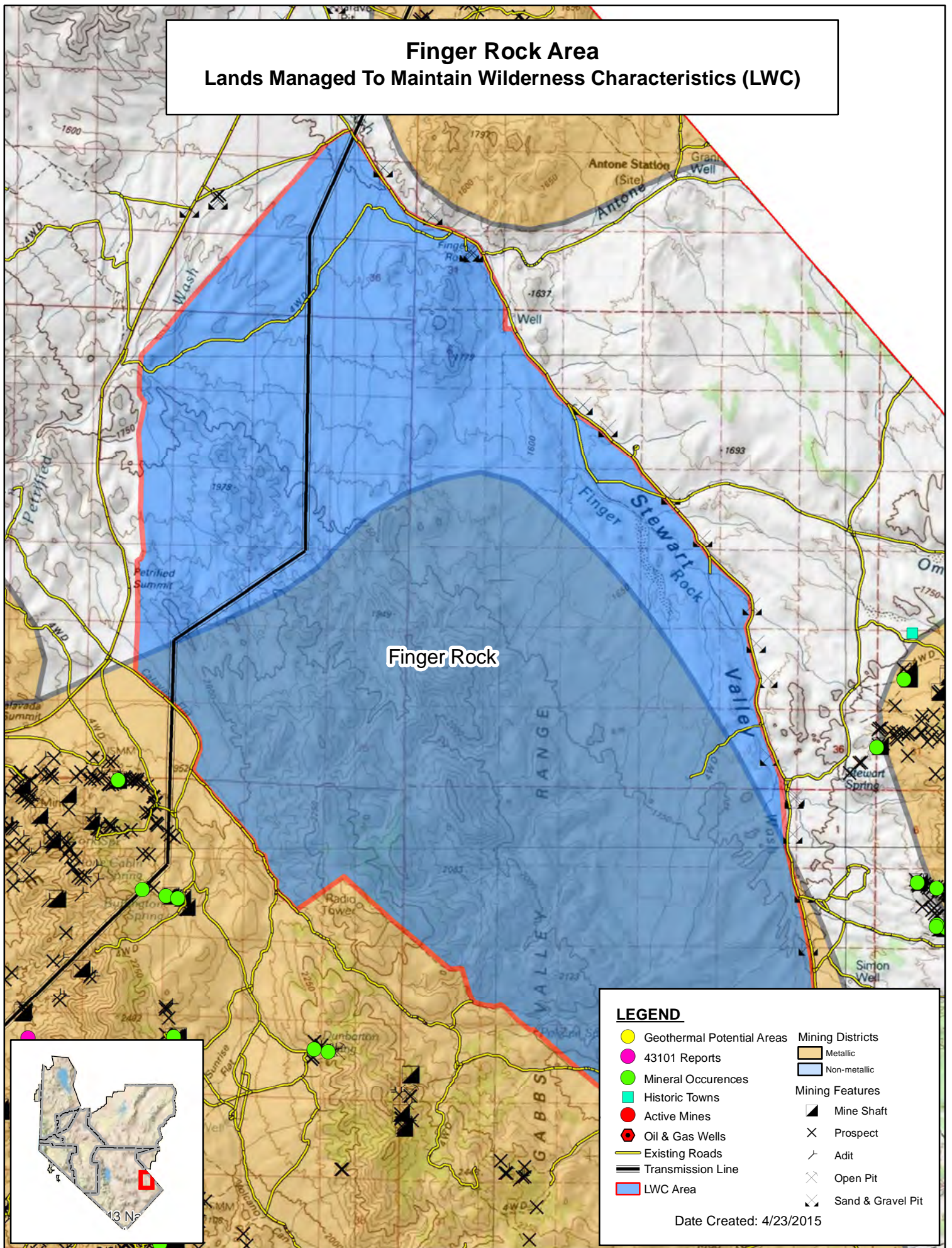


### LEGEND

- |   |  |
|---|--|
| <span style="color: yellow;">●</span> Geothermal Potential Areas  | <span style="background-color: #f4a460; border: 1px solid black; display: inline-block; width: 15px; height: 10px;"></span> Mining Districts |
| <span style="color: magenta;">●</span> 43101 Reports  | <span style="background-color: #add8e6; border: 1px solid black; display: inline-block; width: 15px; height: 10px;"></span> Non-metallic     |
| <span style="color: green;">●</span> Mineral Occurrences  | <b>Mining Features</b>   |
| <span style="background-color: cyan; border: 1px solid black; display: inline-block; width: 15px; height: 10px;"></span> Historic Towns | <span style="color: black;">▲</span> Mine Shaft  |
| <span style="color: red;">●</span> Active Mines   | <span style="color: black;">×</span> Prospect  |
| <span style="color: red;">●</span> Oil & Gas Wells  | <span style="color: black;">└─┘</span> Adit  |
| <span style="color: black;">—</span> Existing Roads   | <span style="color: black;">⊗</span> Open Pit  |
| <span style="color: black;">—</span> Transmission Line  | <span style="color: black;">⊗</span> Sand & Gravel Pit   |
| <span style="background-color: blue; border: 2px solid red; display: inline-block; width: 15px; height: 10px;"></span> LWC Area         |  |

Date Created: 4/23/2015

# Finger Rock Area Lands Managed To Maintain Wilderness Characteristics (LWC)

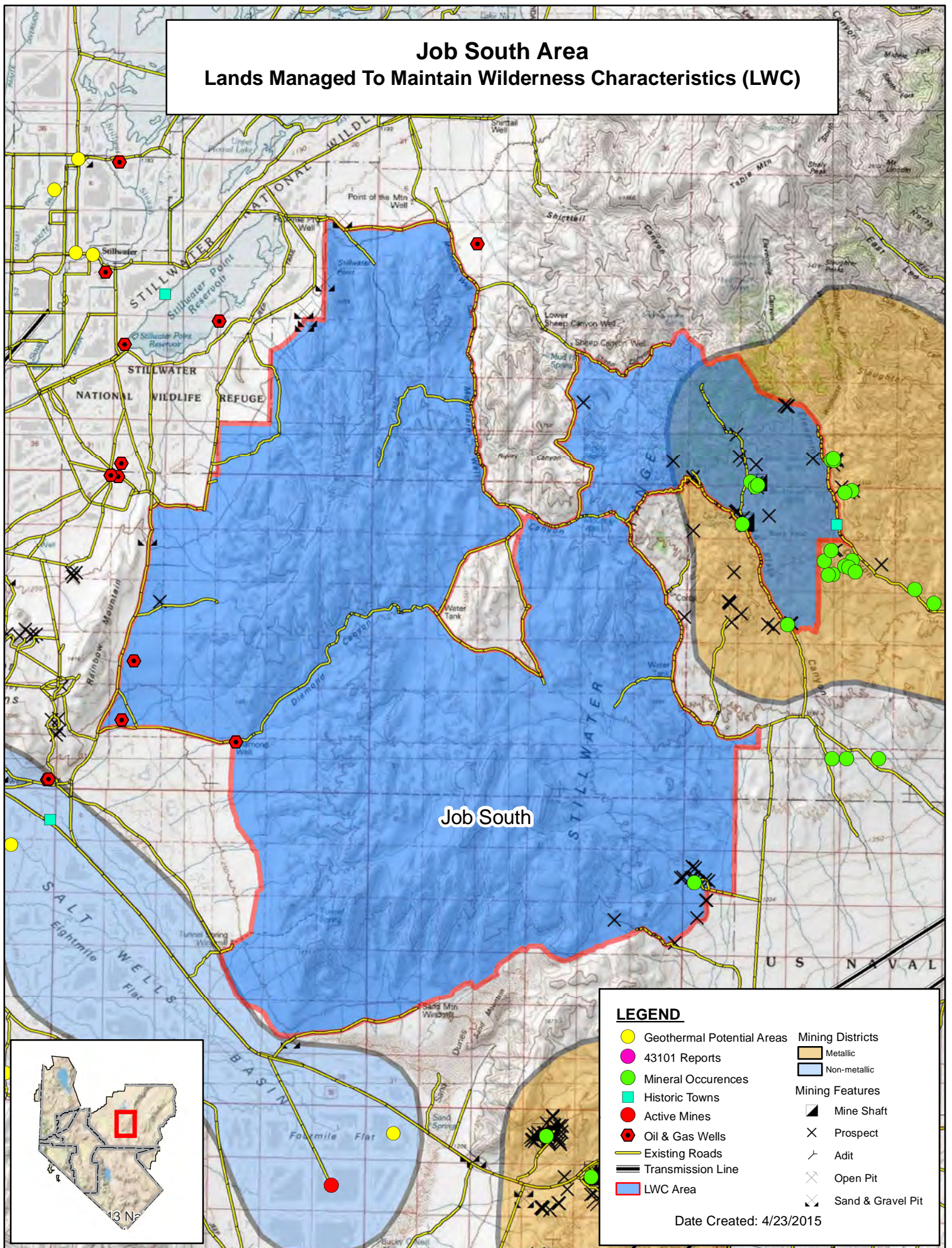


### LEGEND

- Geothermal Potential Areas
  - 43101 Reports
  - Mineral Occurrences
  - Historic Towns
  - Active Mines
  - ◆ Oil & Gas Wells
  - Existing Roads
  - Transmission Line
  - LWC Area
- Metallic Mining Districts
  - Non-metallic Mining Districts
- Mining Features**
  - ▲ Mine Shaft
  - × Prospect
  - └─ Adit
  - ⊗ Open Pit
  - ⊗ Sand & Gravel Pit

Date Created: 4/23/2015

# Job South Area Lands Managed To Maintain Wilderness Characteristics (LWC)



## LEGEND

- |   |   |
|---|---|
| <span style="color: yellow;">●</span> Geothermal Potential Areas  | <span style="background-color: #f4a460; border: 1px solid black; display: inline-block; width: 15px; height: 10px;"></span> Metallic Mining Districts                           |
| <span style="color: magenta;">●</span> 43101 Reports  | <span style="background-color: #add8e6; border: 1px solid black; display: inline-block; width: 15px; height: 10px;"></span> Non-metallic Mining Districts                       |
| <span style="color: green;">●</span> Mineral Occurrences  | <b>Mining Features</b>  |
| <span style="background-color: cyan; border: 1px solid black; display: inline-block; width: 10px; height: 10px;"></span> Historic Towns | <span style="border-left: 1px solid black; border-right: 1px solid black; border-bottom: 1px solid black; display: inline-block; width: 10px; height: 10px;"></span> Mine Shaft |
| <span style="color: red;">●</span> Active Mines   | <span style="color: black;">×</span> Prospect   |
| <span style="color: red;">●</span> Oil & Gas Wells  | <span style="color: black;">└─┘</span> Adit   |
| <span style="color: yellow;">—</span> Existing Roads  | <span style="color: black;">⊗</span> Open Pit   |
| <span style="border-bottom: 2px solid black; width: 20px; display: inline-block;"></span> Transmission Line                             | <span style="color: black;">⊗</span> Sand & Gravel Pit  |
| <span style="background-color: blue; border: 1px solid red; display: inline-block; width: 15px; height: 10px;"></span> LWC Area         |   |

Date Created: 4/23/2015

# Lyon Peak Area

## Lands Managed To Maintain Wilderness Characteristics (LWC)

Rawe Peak

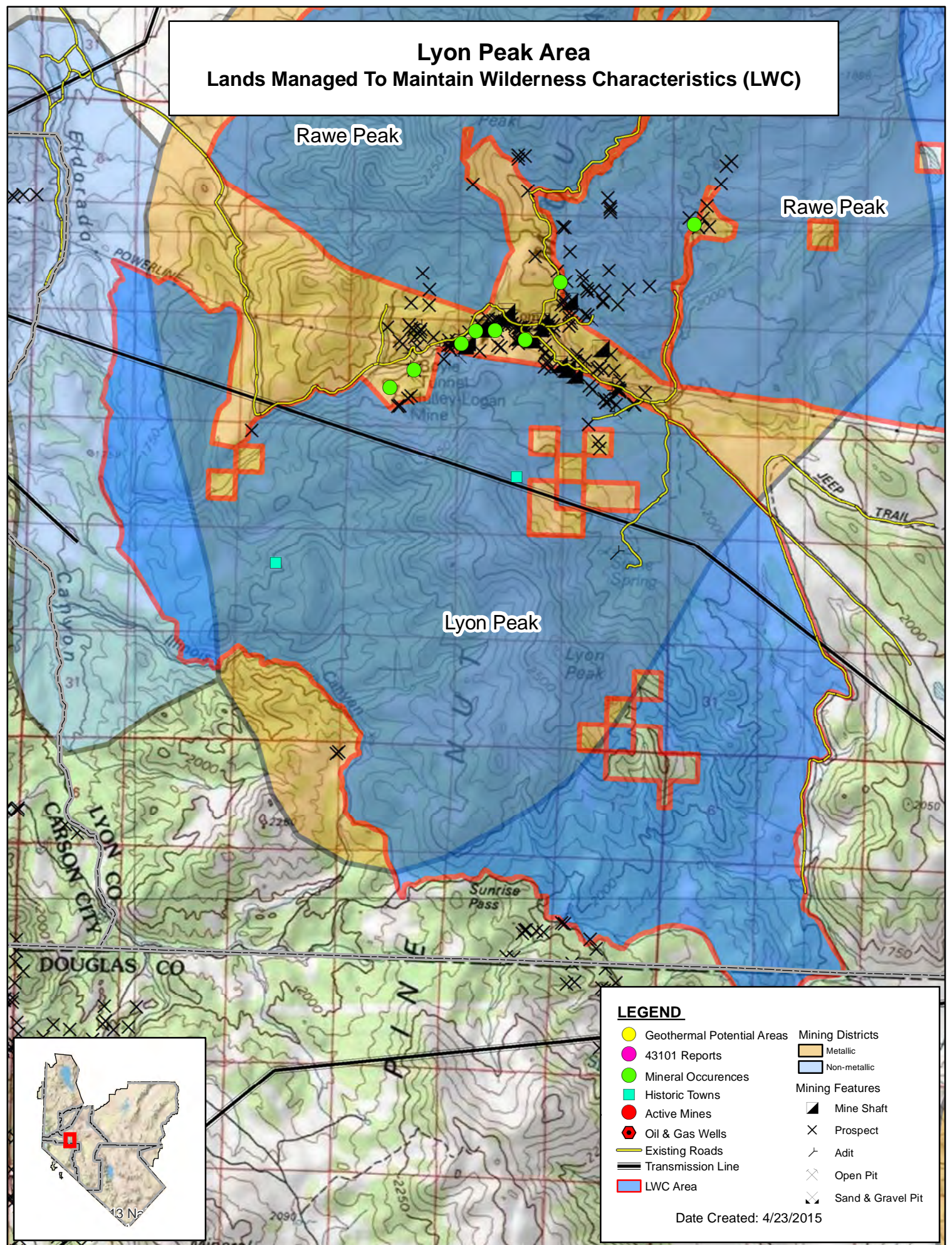
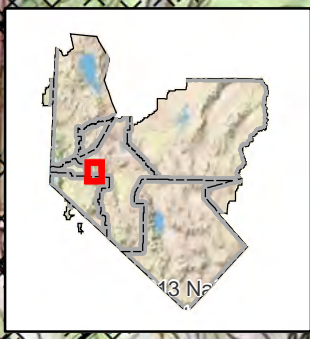
Rawe Peak

Lyon Peak

### LEGEND

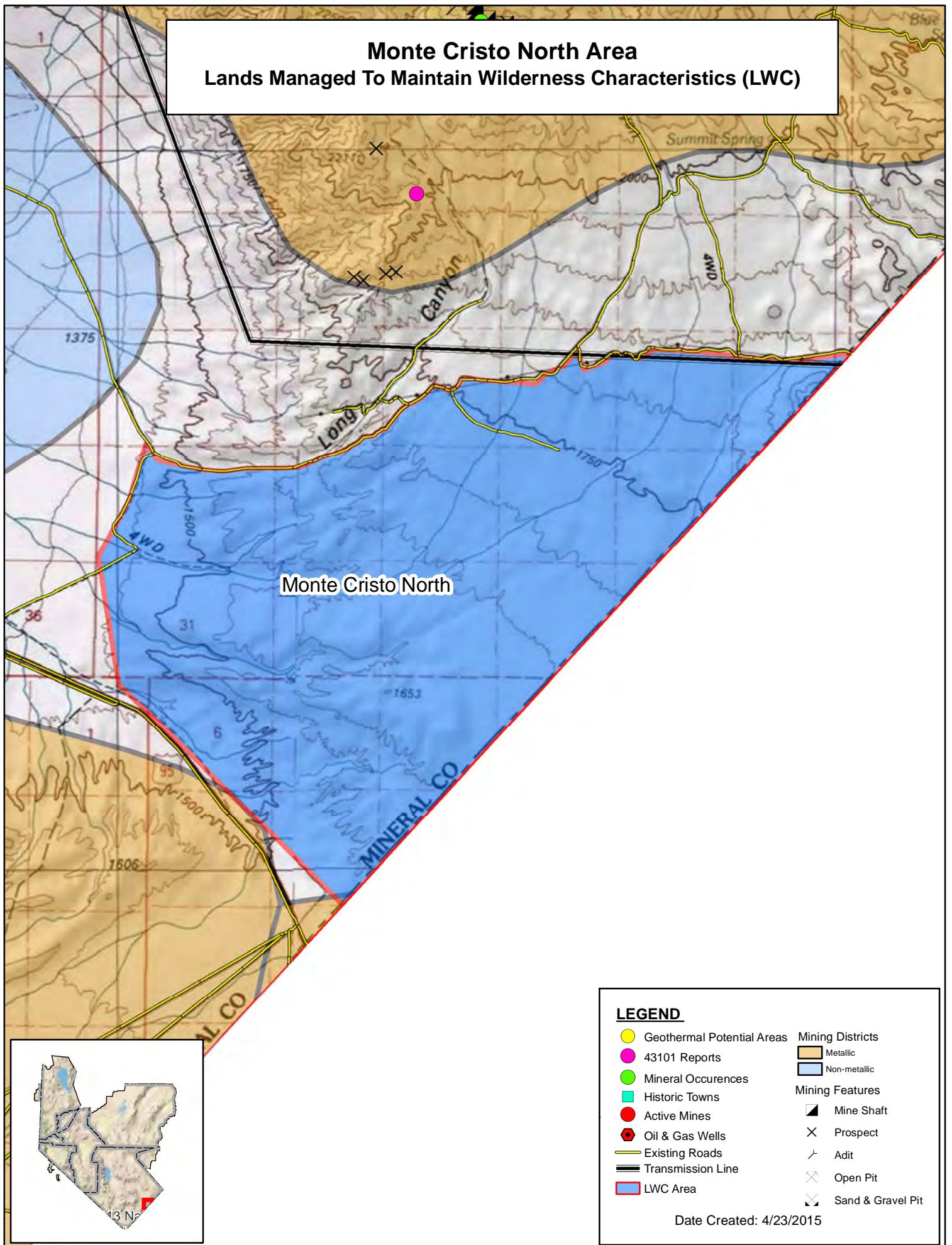
- |   |   |
|---|---|
| <span style="color: yellow;">●</span> Geothermal Potential Areas  | <span style="border: 1px solid orange; display: inline-block; width: 15px; height: 10px;"></span> Metallic Mining Districts   |
| <span style="color: magenta;">●</span> 43101 Reports  | <span style="border: 1px solid blue; display: inline-block; width: 15px; height: 10px;"></span> Non-metallic Mining Districts |
| <span style="color: green;">●</span> Mineral Occurrences  | <b>Mining Features</b>  |
| <span style="color: cyan;">■</span> Historic Towns  | <span style="color: black;">▲</span> Mine Shaft   |
| <span style="color: red;">●</span> Active Mines   | <span style="color: black;">×</span> Prospect   |
| <span style="color: red;">●</span> Oil & Gas Wells  | <span style="color: black;">└─┘</span> Adit   |
| <span style="border-bottom: 1px solid yellow; width: 20px; display: inline-block;"></span> Existing Roads   | <span style="color: black;">⊗</span> Open Pit   |
| <span style="border-bottom: 2px solid black; width: 20px; display: inline-block;"></span> Transmission Line | <span style="color: black;">⊗</span> Sand & Gravel Pit  |
| <span style="border: 2px solid blue; display: inline-block; width: 15px; height: 10px;"></span> LWC Area    |   |

Date Created: 4/23/2015



# Monte Cristo North Area

## Lands Managed To Maintain Wilderness Characteristics (LWC)



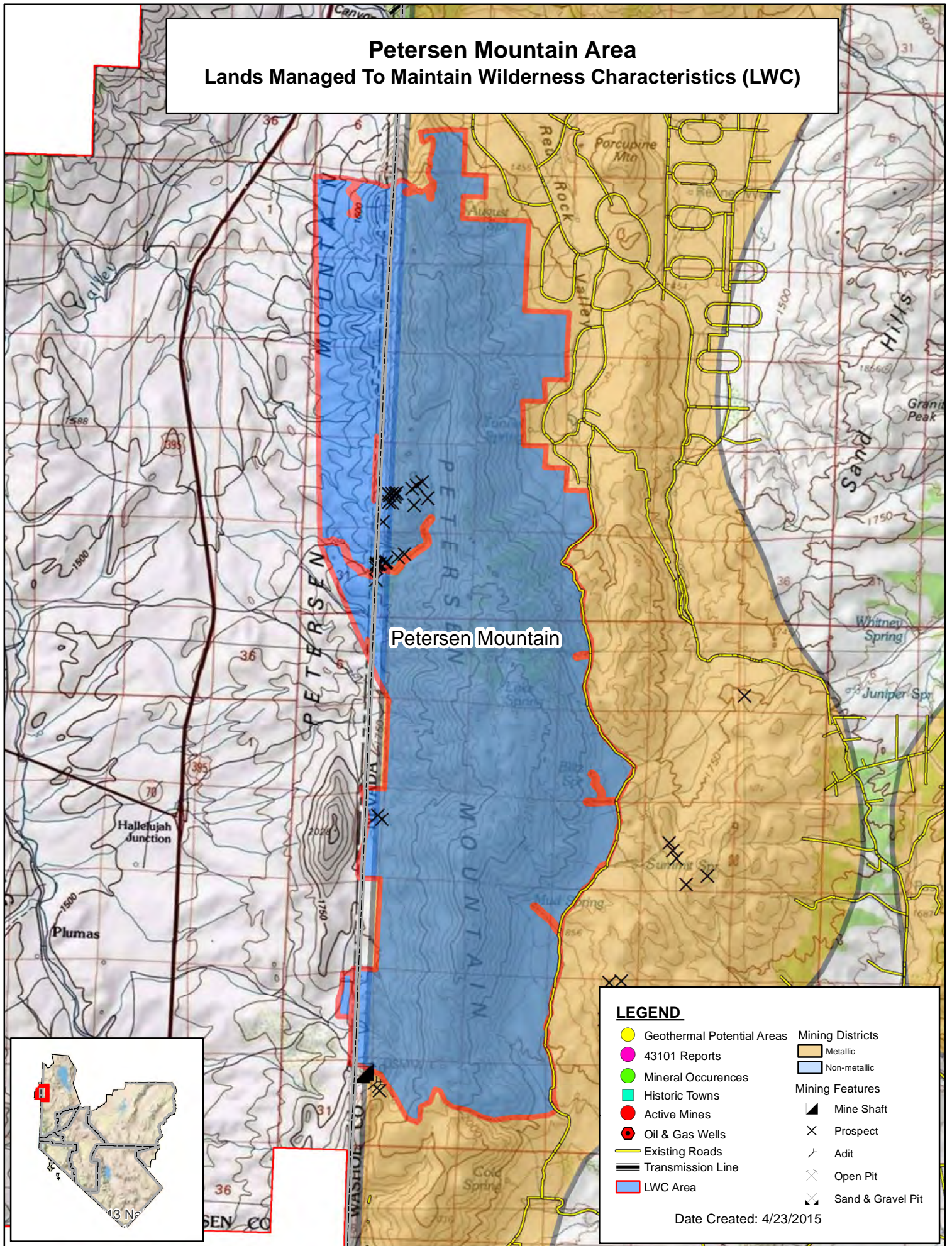
### LEGEND

- |   |  |
|---|--|
| <span style="color: yellow;">●</span> Geothermal Potential Areas  | <span style="background-color: #f4a460; border: 1px solid black; display: inline-block; width: 15px; height: 10px;"></span> Mining Districts |
| <span style="color: magenta;">●</span> 43101 Reports  | <span style="background-color: #f4a460; border: 1px solid black; display: inline-block; width: 15px; height: 10px;"></span> Metallic         |
| <span style="color: green;">●</span> Mineral Occurrences  | <span style="background-color: #add8e6; border: 1px solid black; display: inline-block; width: 15px; height: 10px;"></span> Non-metallic     |
| <span style="color: cyan;">■</span> Historic Towns  | <b>Mining Features</b>   |
| <span style="color: red;">●</span> Active Mines   | <span style="color: black;">▲</span> Mine Shaft  |
| <span style="color: red;">◆</span> Oil & Gas Wells  | <span style="color: black;">×</span> Prospect  |
| <span style="color: yellow;">—</span> Existing Roads  | <span style="color: black;">└─┘</span> Adit  |
| <span style="color: black;">—</span> Transmission Line  | <span style="color: black;">⊗</span> Open Pit  |
| <span style="background-color: blue; border: 1px solid red; display: inline-block; width: 15px; height: 10px;"></span> LWC Area | <span style="color: black;">⊗</span> Sand & Gravel Pit   |

Date Created: 4/23/2015



# Petersen Mountain Area Lands Managed To Maintain Wilderness Characteristics (LWC)

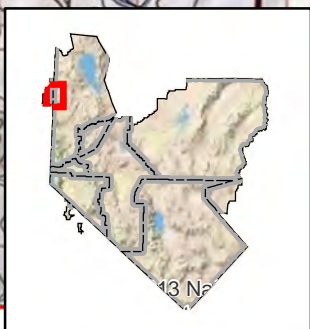


Petersen Mountain

### LEGEND

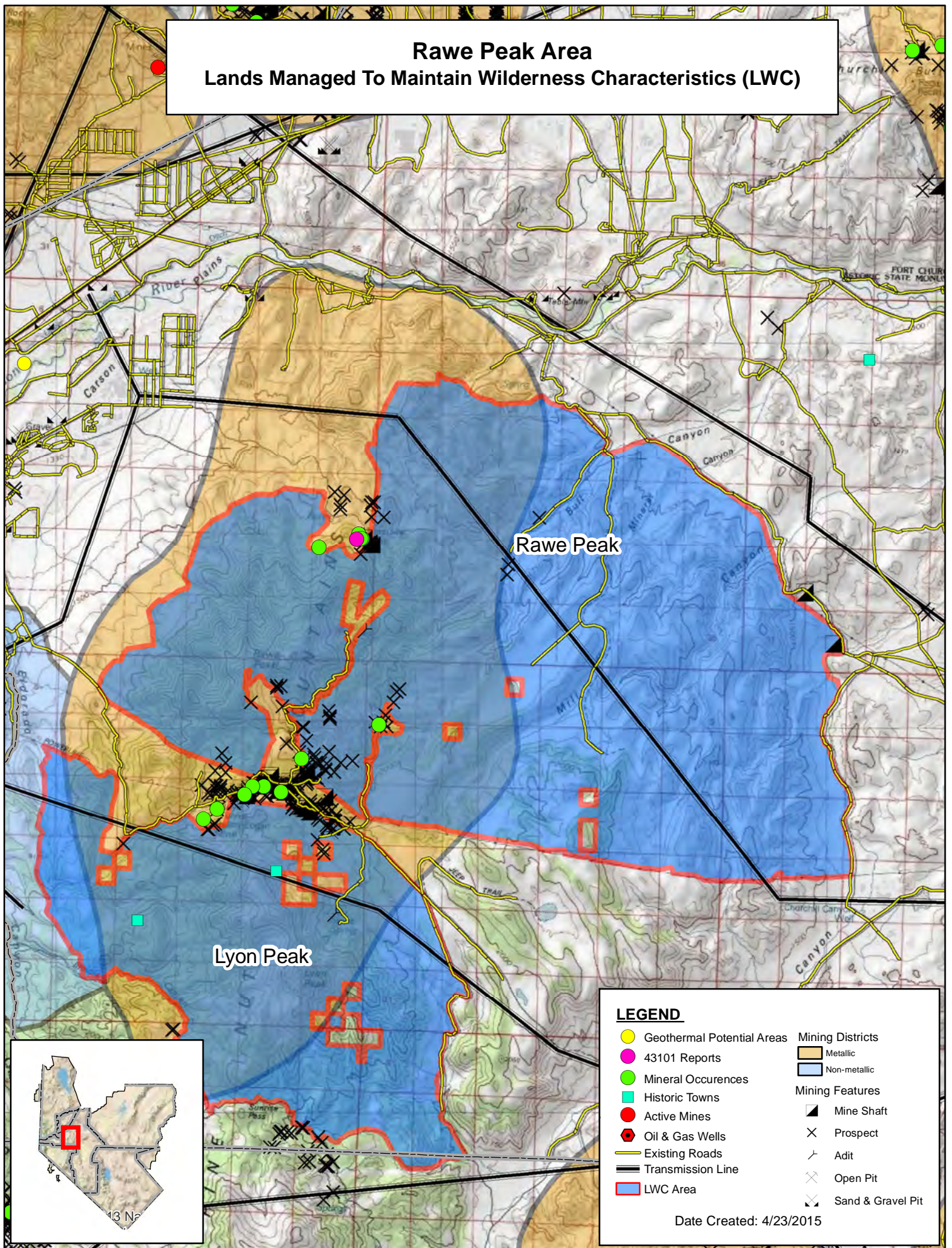
- |  |  |
|--|--|
| <span style="color: yellow;">●</span> Geothermal Potential Areas   | <span style="border: 1px solid orange; display: inline-block; width: 10px; height: 10px;"></span> Metallic   |
| <span style="color: magenta;">●</span> 43101 Reports   | <span style="border: 1px solid blue; display: inline-block; width: 10px; height: 10px;"></span> Non-metallic |
| <span style="color: green;">●</span> Mineral Occurrences   | <b>Mining Features</b>   |
| <span style="color: cyan;">■</span> Historic Towns   | <span style="color: black;">▲</span> Mine Shaft  |
| <span style="color: red;">●</span> Active Mines  | <span style="color: black;">×</span> Prospect  |
| <span style="color: red;">●</span> Oil & Gas Wells   | <span style="color: black;">└─┘</span> Adit  |
| <span style="color: yellow;">—</span> Existing Roads   | <span style="color: black;">⊗</span> Open Pit  |
| <span style="color: black;">—</span> Transmission Line   | <span style="color: black;">⊗</span> Sand & Gravel Pit   |
| <span style="border: 2px solid blue; display: inline-block; width: 10px; height: 10px;"></span> LWC Area |  |

Date Created: 4/23/2015



# Rawe Peak Area

## Lands Managed To Maintain Wilderness Characteristics (LWC)

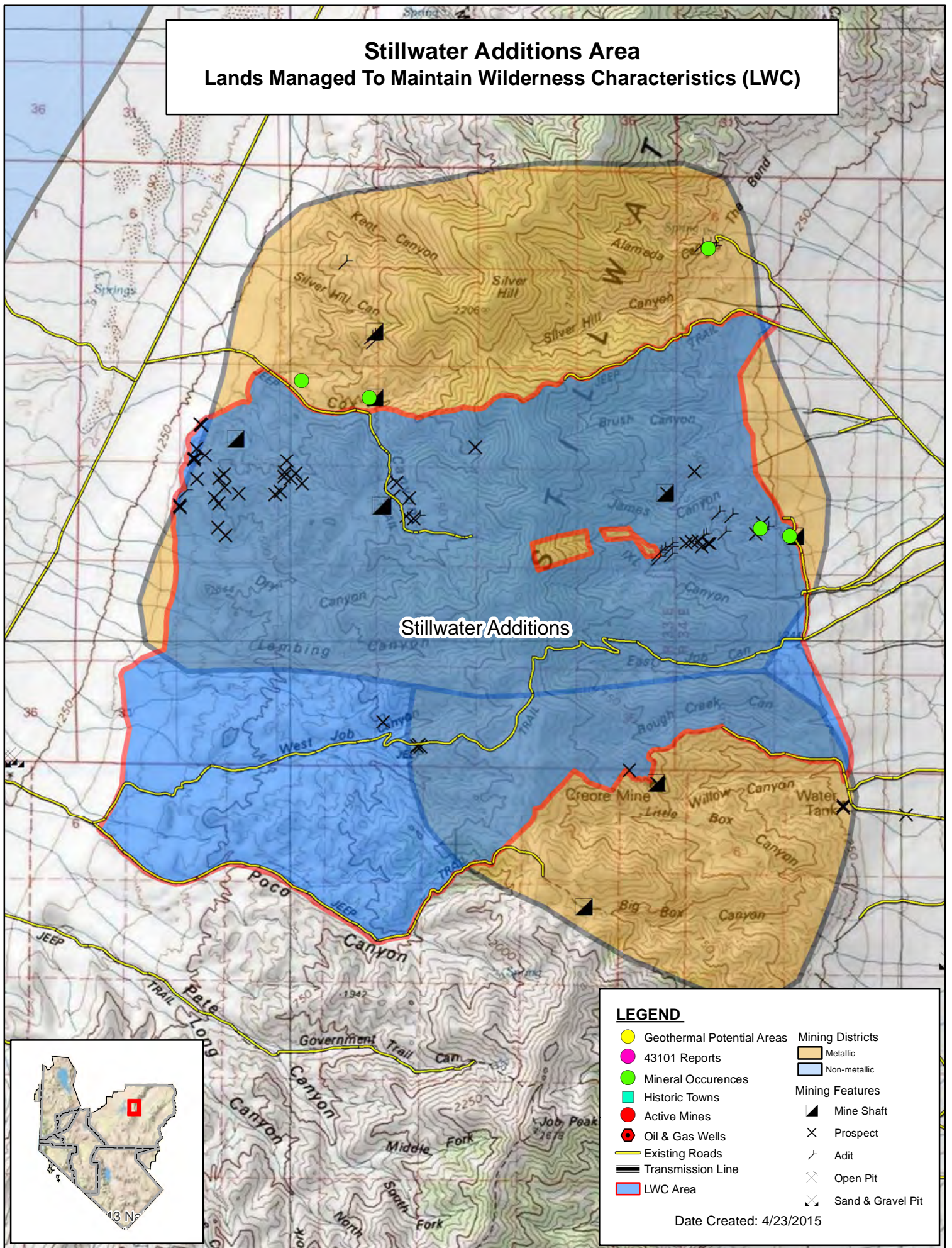


### LEGEND

- Geothermal Potential Areas
- 43101 Reports
- Mineral Occurrences
- Historic Towns
- Active Mines
- ◆ Oil & Gas Wells
- Existing Roads
- Transmission Line
- LWC Area
- Mining Districts
- Non-metallic
- Mining Features**
- ▲ Mine Shaft
- × Prospect
- ┘ Adit
- ⊗ Open Pit
- ⊗ Sand & Gravel Pit

Date Created: 4/23/2015

# Stillwater Additions Area Lands Managed To Maintain Wilderness Characteristics (LWC)



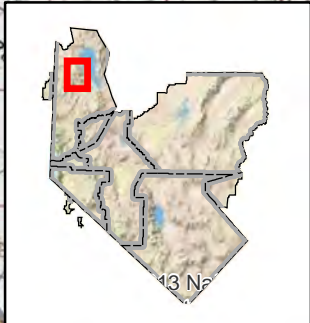
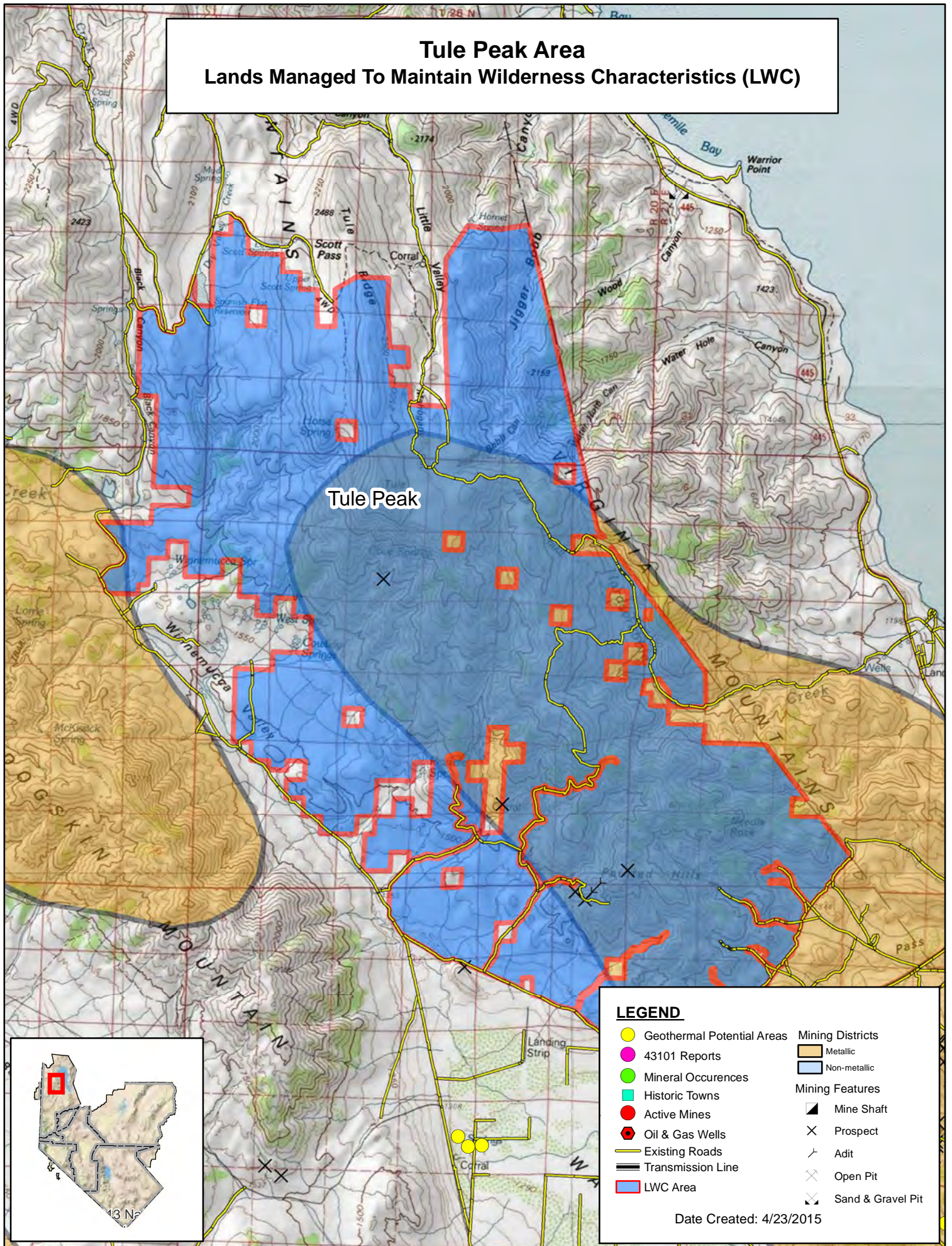
### LEGEND

- Geothermal Potential Areas
- 43101 Reports
- Mineral Occurrences
- Historic Towns
- Active Mines
- ◆ Oil & Gas Wells
- Existing Roads
- Transmission Line
- LWC Area
- Metallic Mining Districts
- Non-metallic Mining Districts
- Mining Features**
- ▲ Mine Shaft
- × Prospect
- └─┘ Adit
- ⊗ Open Pit
- ⊗ Sand & Gravel Pit

Date Created: 4/23/2015

# Tule Peak Area

## Lands Managed To Maintain Wilderness Characteristics (LWC)



**LEGEND**

<span style="color: yellow;">●</span> Geothermal Potential Areas	<span style="border: 1px solid orange; display: inline-block; width: 15px; height: 10px;"></span> Metallic Mining Districts
<span style="color: magenta;">●</span> 43101 Reports	<span style="border: 1px solid blue; display: inline-block; width: 15px; height: 10px;"></span> Non-metallic Mining Districts
<span style="color: green;">●</span> Mineral Occurrences	<b>Mining Features</b>
<span style="color: cyan;">■</span> Historic Towns	<span style="color: black;">▲</span> Mine Shaft
<span style="color: red;">●</span> Active Mines	<span style="color: black;">×</span> Prospect
<span style="color: red;">◆</span> Oil & Gas Wells	<span style="color: black;">└─┘</span> Adit
<span style="color: yellow;">—</span> Existing Roads	<span style="color: black;">⊗</span> Open Pit
<span style="color: black;">—</span> Transmission Line	<span style="color: black;">⊗</span> Sand & Gravel Pit
<span style="border: 2px solid blue; display: inline-block; width: 15px; height: 10px;"></span> LWC Area	

Date Created: 4/23/2015